

FS-6025MFP/FS-6030MFP

MONOCHROME MULTIFUNCTIONAL FOR A4/A3 FORMAT

ECOSYS stands for ECOlogy, ECOmy and SYStem-printing. With their long-life components, ECOSYS devices are designed to maximise durability and minimise the total cost of ownership with regard to maintenance, administration and consumables. The cartridge-free system means that only the toner has to be replaced regularly. The modular design concept allows you to add workflow-enhancing functions as required. Integrated system software provides long-term cross-network compatibility. KYOCERA's long-life components cost you and the environment less.

General
Technology: KYOCERA ECOSYS, Mono Laser
Engine speed FS-6025MFP: Up to 25/12 pages A4/A3 per minute
Engine speed FS-6030MFP: Up to 30/15 pages A4/A3 per minute
Resolution: 600 x 600 dpi (print), 600 x 600 dpi (scan/copy)
Duty cycle FS-6025MFP: Max. 80,000 pages per month
Duty cycle FS-6030MFP: Max. 100,000 pages per month
Recommended monthly printing volume FS-6025MFP: Up to 4,000 pages**
Recommended monthly printing volume FS-6030MFP: Up to 5,000 pages**
Warm-up time: Approx. 21 seconds or less
Time to first print: Approx. 8 seconds or less
Time to first copy: Approx. 9.2 seconds or less (DP), 7.8 seconds or less (Platen Cover)
CPU: PowerPC 464 / 800 MHz
Memory: Standard 512 MB, max. 1,536 MB
Standard interface: USB 2.0 (Hi-Speed), USB Host 2.0, Fast Ethernet 10/100/1000Base-TX, slot for optional print server, slot for optional CompactFlash®-Card
Integrated accounting: 100 department codes
Dimensions with platen cover (WxDxH): 590 x 590 x 586.5 mm (FS-6025MFP/B)
Dimensions with document processor (WxDxH): 590 x 590 x 694 mm (FS-6025MFP, FS-6030MFP)
Weight with platen cover: Approx. 46.5 kg including toner container
Weight with document processor: Approx. 52.2 kg including toner container
Power source: AC 220 ~ 240 V, 50/60 Hz
Power consumption
Printing FS-6025MFP: 553 Watt, FS-6030MFP: 570 Watt
Copying FS-6025MFP: 553 Watt, FS-6030MFP: 570 Watt
Standby: FS-6025MFP: 119 Watt, FS-6030MFP: 119 Watt
Sleep-mode: FS-6025MFP: 1.0 Watt, FS-6030MFP: 1.0 Watt
Noise (sound pressure level: ISO 7779/ISO 9296)
FS-6025MFP – copying/printing: 45.5 dB(A)
FS-6030MFP – copying/printing: 45.8 dB(A)
Stand-by: 25.4 dB(A)
Safety standards: TÜV/GS, CE
This unit is manufactured according to ISO 9001 quality standard and ISO 14001 environmental standard.

Paper handling
All paper capacities quoted are based on a paper thickness of max. 0.11 mm. Please use paper recommended by KYOCERA under normal environmental conditions.
Input capacity: 100-sheet multi-purpose tray, 45–256 g/m² (52–163 g/m² for larger than A4/Letter size), A3, A4, A5, A6, B5, Letter, Legal, Folio, envelopes, Custom (98 x 148 to 297 x 432 mm)
500-sheet universal paper cassette, 60–163 g/m², A3, A4, A5, B5, Letter, Legal, Folio, max. input capacity with options: 1,600 sheets

Your KYOCERA Business Partner:

PRESCRIBE II
With the KYOCERA page design and control language PRESCRIBE II, even complex graphics, logos and forms (multipart forms) can be created independently on the system and saved and updated in the printer. Consequently, integration into print files no longer applies. They are only accessed as required and therefore relieve the load on the network.
The KM NetViewer
The KM NetViewer enables complete monitoring and control of all ECOSYS printers and digital KYOCERA multifunction units from any Windows® PC and thus provides ideal network administration. It also supports the standardised SNMP protocol.
Status Monitor and Command Center
The Status Monitor shows the current printer's condition and gives direct access to the Command Center for the modification of settings that are not contained in the drivers (e.g. network settings, adjustment of sleep mode or blocking of the control panel).
USB Host Interface for USB Flash Memory
Documents can be printed directly from and scanned to a USB Flash Memory (e.g. USB stick) via the USB host interface. The documents stored as PDF, XPS, TIFF or JPEG are selected directly via the printer's control panel. No computer is required.

Duplex unit: Duplex as standard supports 60–163 g/m²
Reversing document processor: 50-sheet, Simplex scan 45–160 g/m², Duplex scan 50–120 g/m², A3, A4, A5, B5, Letter, Legal, Custom (140 x 182 to 297 x 432 mm)
Output capacity: Max. 300 sheets; 250 sheets face-down (Main Tray) plus 50 sheets (Job Separator Tray)
Print functions
Controller language: PRESCRIBE II
Emulations: PCL 6 (5e/XL), KPDL 3 (PostScript 3 compatible), PDF Direct Print, XPS Direct Print
Operating systems: All current Windows operating systems, MAC OS X Version 10.4 or higher, Unix, Linux as well as other operating systems on request
Fonts/barcodes: 93 outline fonts (PCL 6, KPDL3) + 8 (Windows Vista), 1 Bitmap font, 45 types of one-dimensional barcodes, 1 type of two-dimensional barcode (PDF417)
Features: encrypted PDF Direct Print, IPP printing, e-mail printing, WSD print, secure printing via SSL, IPsec, SNMPv3, Private Print (requires memory expansion)
Copy functions
Max. original size: A3/Ledger
Continuous copying: 1–999
Zoom range: 25–400% in 1% steps
Preset magnification ratios: 5 Reductions / 5 Enlargements
Exposure mode: Auto, manual: 7 steps
Image adjustments: Text, Photo, Text + Photo, Graphic/Map, Copy/Printout
Features: Scan-once-copy-many, electronic sort, 2in1, 4in1, job reserve, priority print, program, auto duplex copy, split copy, continuous scan, auto cassette change (PF-470 or PF-471 is required), copy density control, Prevent Bleed-Through

Scan functions
Functionality: Scan-to-E-mail, Scan-to-FTP, Scan-to-SMB, Scan to USB Host, Network TWAIN, WIA, WSD scan
Scan speed: 40 ipm (300 dpi, A4, b/w), 20 ipm (300 dpi, A4 colour)
Scan resolution: 600, 400, 300, 200 dpi (256 greyscales per colour)
Max. scan size: A3, Ledger
Original recognition: Text, photo, text + photo, OCR
File types: TIFF, PDF, PDF/A, JPEG, XPS
Compression method: MMR/JPEG
Features: Integrated address book, Active Directory support, encrypted data transfer, multi send (e-mail, fax, SMB/FTP folder, print) at once

Fax functions (optional)
Compatibility: ITU-T Super G3
Modem speed: Max. 33.6 kbps
Transmission speed: Less than 3 sec
Scanning speed: 2.0 seconds (Quick Scanning, Bitmap)
Address book: 200 entries

Scanning density
Normal: 8 dot/mm x 3.85 line/mm
Fine: 8 dot/mm x 7.7 line/mm
Superfine: 8 dot/mm x 15.4 line/mm
Ultrafine: 16 dot/mm x 15.4 line/mm
Halftone: 256 grey scales
Maximum original size: A3, Ledger
Compression method: JBIG, MMR, MR, MH
Memory reception: 700 sheets or more
Features: Network fax, duplex transmission and reception, encrypted transmission and reception, polling transmission and reception, broadcast
Consumables
Average continuous toner yield in accordance with ISO/IEC 19752
TK-475 Toner Kit: Microfine toner black for 15,000 pages A4
Capacity of starter toner is 3,000 pages A4

Options
Fax System (U)
Paper handling
PF-470 Paper feeder: Max. 500 sheets; 60–163 g/m²; A3, A4, A5, B5, Letter, Legal, Custom (98 x 148 to 297 x 432 mm)
PF-471 Paper feeder: Max. 1,000 sheets; 60–163 g/m²; A3, A4, A5, B5, Letter, Legal, Custom (98 x 148 to 297 x 432 mm)
DF-470* Document finisher + AK-470: Max. 500 sheets 60–256 g/m²; A3, A4, A5, B5, Letter, Legal, Custom (98x148 to 297x432 mm), 3 positions stapling up to 50 sheets A4 or 25 sheets A3
*Bridge unit AK-470 is required for the use of DF-470
Memory upgrade
MDDR2-256: 256 MB; MDDR2-512: 512 MB, MDDR2-1024: 1,024 MB
CF*-Card: CF-4 (4 GB) for printing forms, fonts, logos, macro storage
USB Flash Memory: Supports direct printing and scanning of PDF, XPS, TIFF, JPEG files via USB Host interface
UG-33: ThinPrint support
USB IC Card Reader + Card Authentication Kit (B): Support for various authentication keys available
Optional interface
IB-50: GigaBit-Printserver 10BaseT/100BaseTX/1000BaseT
CB-470 Cabinet: Wooden desk with storage capacity, including castors (wheels)
CB-471 Cabinet: Wooden base for height increase (to be used only with PF-470 or PF-471)
CB-472 Cabinet: Metal desk with storage capacity, including castors (wheels)
CB-473 Cabinet: Metal base for height increase (to be used only with PF-470 or PF-471)

Warranty
1-year warranty as standard.*** KYOCERA guarantees the drum and developer for 3 years or 300,000 pages (whichever occurs sooner), provided each device is used and cleaned in accordance with the service instructions.
KYO LIFE Up to 5-year on-site warranty extensions available for product and options.



Product depicted includes optional extras.

FS-6025MFP/FS-6030MFP
FS-C8020MFP/FS-C8025MFP

COMPACT ECOSYS MULTIFUNCTIONALS FOR A4/A3 FORMAT

► print ► copy ► scan ► fax

NEED LOW-COST, PROFESSIONAL
DOCUMENT OUTPUT IN YOUR COMPACT OFFICE?



KYOCERA MITA Europe B.V. – Branch Office Germany – Otto-Hahn-Straße 12 – 40670 Meerbusch – Germany
Tel +49 (0) 2159 928-500 – Fax +49 (0) 2159 918-100
www.kyoceramita-europe.com – info@kyoceramita-europe.com
KYOCERA MITA Corporation – 2-28, 1-Chome – Tamatsukuri – Chuo-Ku
Osaka 540-8585 – Japan – www.kyoceramita.com

* KYOCERA does not warrant that any specifications mentioned will be error-free. Specifications are subject to change without notice. Information is correct at time of going to press. All other brand and product names may be registered trademarks or trademarks of their respective holders and are hereby acknowledged. **Based on 60 months' usage. *** Depending on the country.



NEED A PROFESSIONAL MFP FOR A SMALL OFFICE WITH A SMALLER BUDGET?



KYOCERA's unique ECOSYS technology cuts the cost of consumables and energy use. It also provides exceptionally low printing and whole-of-life costs. Long-life technology with longer maintenance cycles help ensure unprecedented reliability.

ECOSYS is where economy and ecology meet. It has been designed to minimise ozone emissions and reduce noise levels, whilst promoting a more comfortable office environment. Make the most of your office environment and your budget, with KYOCERA.

DESIGNED TO MEET THE PROFESSIONAL REQUIREMENTS OF SMALL OFFICES

Just because your office is small does not mean you are less demanding. You still have professional printing requirements; you still need high-quality output and if anything, you need even greater efficiency and productivity.

Specifically designed to handle the volume demands of networks and workgroups with between 10 and 20 users, these new KYOCERA MFPs offer a paper capacity of up to 1,600 pages from four sources, and the ability to process paper weights of up to 256 g/m².

The innovative colour touch panel can be customised to each user, making it easy to access all the functions you really need.

Additionally, these new multifunctional devices offer all the benefits of professional-level document management, including A3 format printing, and copying at up to 30 pages per minute, at a price that fits the most challenging budget.

With the flexibility of standard functionalities such as faxing and colour scanning directly to your PC, a network folder or a USB flash memory stick, as well as the reduced paper usage of standard duplex printing, these new KYOCERA devices easily satisfy the professional demands of compact offices.

PRODUCT HIGHLIGHTS TO MEET YOUR REQUIREMENTS:

- ▶ Up to 30/15 pages A4/A3 per minute
- ▶ Time to first copy: 9.2 seconds or less
- ▶ Professional print, copy, scan and fax functionality
- ▶ Colour scan functionality
- ▶ Up to 1,600 sheet paper capacity
- ▶ Minimum installation and operation requirements
- ▶ Easy to use Colour Touch Panel with wizard-style navigation
- ▶ 360° all-round style design and low noise emissions
- ▶ Long-life components provide unprecedented efficiency and reliability
- ▶ Exceptionally low total cost of ownership in its class



NEED PROFESSIONAL QUALITY FULL-COLOUR PRINTING?

Together with A3 printing, these new, compact KYOCERA multifunctional devices offer full, professional print quality and functionality. The FS-C8020MFP and FS-C8025MFP offer vibrant, high-resolution colour printing. Improved toner technology combined with improved hardware ensure pin-sharp lines and clear images.

And with such advanced colour technology, the quality of your documents will perfectly match the image of your

company. An extended range of colours produce a rich, vibrant clarity to your printing that sends a clear message to everyone who handles your documents.

The new KYOCERA MFP devices are the smart choice for eco-friendly offices. When the toner does finally run out, it is only the toner container that needs to be replaced, instead of an entire cartridge including drum and/or developer.



NEED A DEVICE THAT IS **EASY** TO INSTALL,
EASY TO SET UP AND **EASY** TO USE ?

NEED PROFESSIONAL FUNCTIONALITY WITH USER-FRIENDLY INSTRUCTIONS?

So you need to print, fax and copy data in A4 and A3? No problem. Like to scan and share documents in colour even if printing jobs are mainly done in B/W? At no extra cost? Also no problem. No more lost time on complex operations. No more frustrations trying to work out the best way to present your document's contents.

Imagine being able to scan your documents and send them direct to an individual PC, store them on a network server, or even attach to specific e-mail. In fact, simply by-pass the traditional dispatch and printing bottle necks.

Streamline your archiving by ensuring documents are stored and easily retrievable from where they belong. Use sophisticated document management functions such as logins, codes, user defined functions, colour print volume controls and access.



NEED EFFICIENCY, FLEXIBILITY AND INCREASED PRODUCTIVITY?

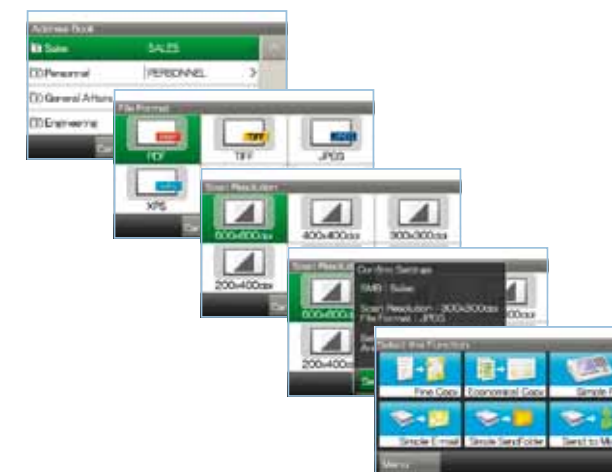
With a generous paper capacity, a fast first copy time and impressive performances in speed, you can be sure this device can handle the most demanding office printing requirements. Include a reversible document processor, and a job separator to keep the output of different users apart, and you can start to see how much more efficient and productive your office could be with one of these new, compact KYOCERA multifunctional devices. With a powerful controller, as well as a durable, high-speed document processor, all your copies, scans and faxes can be sent across either local or wide area networks. And despite the fact they offer the most sophisticated functionality, the new KYOCERA MFPs are still incredibly easy to use.

But that's not all. These new multifunctionals also stand out because of how much they save. Less wasted time. Less wasted paper. Fewer wrongly sent and misdirected documents, and less customer dissatisfaction, as well. Just fast warm up, quiet operation and professional document management in a stylish, compact design.

NEED TO KEEP YOUR INFORMATION, DOCUMENTS AND DATA SECURE?

Data security has become a high priority, and these multifunctional devices offer the latest security standards required in modern corporate network environments. They are easily integrated into your company's IT infrastructure and come with an IPsec and the SSL suite of encryption protocols, to guarantee the data travelling through your network is secured.

Active Directory network authentication delivers further security without the need to set ID access data for each single user. Simply use the preset network authentication data for managing access rights to the machine's functionalities.



NEED PROFESSIONAL FUNCTIONALITY
TO FIT YOUR COMPACT, WELL-DESIGNED OFFICE ?

KYOCERA's new A4 and A3, MFP devices are designed with compact, well-designed offices in mind. Their 360° all-round style looks good from any direction; even in the middle of the office! You can even fine tune them to suit your unique work requirements, due to their compact design.

Additional paper cassettes with one or two paper feeders, network faxing, gigabit Ethernet card, thin print activation and an up to 500 sheet staple finisher. These new ECOSYS A4 and A3 MFPs provide big support in any small office.

Additional efficiency & cost savings

Reverse automatic document processing*

Give your documents the right finish

500 sheet staple finisher

Easy to replace

Toner and waste toner box

Multitalented versatility

500 sheet cassette with 2 paper feeders

Easy to use for everyone!

Colour touch panel with wizard-type navigation

Fast & secure printing

USB host for direct printing



* optional for FS-C8020MFP/FS-C8025MFP

NEED A PARTNERSHIP, NOT JUST A SUPPLIER? COUNT ON US.

As one of the leading manufacturers of office document solutions, KYOCERA is committed to delivering consistently high-quality products and services. We not only provide you with the most reliable hardware and software, but also offer exceptional service, comprehensive consulting and tailor-made financing. Whatever your needs – you can count on us. Want to know more? Simply get in touch with your local KYOCERA Business Partner.

FS-C8020MFP/FS-C8025MFP

COLOUR MULTIFUNCTIONAL FOR A4/A3 FORMAT

ECOSYS stands for ECology, EConomy and SYstem-printing. With their long-life components, ECOSYS devices are designed to maximise durability and minimise the total cost of ownership with regard to maintenance, administration and consumables. The cartridge-free system means that only the toner has to be replaced regularly. The modular design concept allows you to add workflow-enhancing functions as required. Integrated system software provides long-term cross-network compatibility. KYOCERA's long-life components cost you and the environment less.

- PRESCRIBE II**
With the KYOCERA page design and control language PRESCRIBE II, even complex graphics, logos and forms (multipart forms) can be created independently on the system and saved and updated in the printer. Consequently, integration into print files no longer applies. They are only accessed as required and therefore relieve the load on the network.
- The KM NetViewer**
The KM NetViewer enables complete monitoring and control of all ECOSYS printers and digital KYOCERA multifunction units from any Windows® PC and thus provides ideal network administration. It also supports the standardised SNMP protocol.
- Status Monitor and Command Center**
The Status Monitor shows the current printer's condition and gives direct access to the Command Center for the modification of settings that are not contained in the drivers (e.g. network settings, adjustment of sleep mode or blocking of the control panel).
- USB Host Interface for USB Flash Memory**
Documents can be printed directly from and scanned to a USB Flash Memory (e.g. USB stick) via the USB host interface. The documents stored as PDF, XPS, TIFF or JPEG are selected directly via the printer's control panel. No computer is required.

General	Duplex unit: Duplex as standard supports 60–220 g/m² Reversing document processor: 50-sheet, Simplex scan 45–160 g/m², Duplex scan 50–120 g/m², A3, A4, A5, B5, Ledger, Letter, Legal, Custom (140x182 to 297x432mm) Output capacity: Max. 280 sheets; 250 sheets face-down (main tray) plus 30 sheets (job separator tray)
Print functions	Controller language: PRESCRIBE IIc Emulations: PCL 6 (5c/XL), KPDL 3 (PostScript 3 compatible), PDF Direct Print, XPS Direct Print Operating systems: All current Windows operating systems, MAC OS X Version 10.4 or higher, Unix, Linux as well as other operating systems on request Fonts/barcodes: 93 outline fonts (PCL 6, KPDL3) + 8 (Windows Vista), 1 Bitmap font, 45 types of one-dimensional barcodes, 1 type of two-dimensional barcode (PDF417) Features: Encrypted PDF Direct Print, IPP printing, e-mail printing, WSD print, secure printing via SSL, IPsec, SNMPv3, Private Print (requires memory expansion)
Copy functions	Max. original size: A3/Ledger Continuous copying: 1–999 Zoom range: 25–400% in 1% steps Preset magnification ratios: 5 Reductions / 5 Enlargements Exposure mode: Auto, manual: 7 steps Image adjustments: Text, photo, text + photo, graphic/map, printer output Features: Scan-once-copy-many, electronic sort, 2in1, 4in1, job reserve, priority print, program, auto duplex copy, split copy, continuous scan, auto cassette change (PF-470 or PF-471 is required), copy density control, Prevent Bleed-Through
Scan functions	Functionality: Scan-to-E-mail, Scan-to-FTP, Scan-to-SMB, Scan to USB Host, Network TWAIN / WIA, WSD scan Scan speed: 40ipm (300dpi, A4, b/w, colour) Scan resolution: 600, 400, 300, 200, 400 x 200, 200 x 100 dpi (256 greyscales per colour) Max. scan size: A3, Ledger Original recognition: Text, photo, text + photo, OCR File types: TIFF, PDF, PDF/A, JPEG, XPS Compression method: MMR / JPEG Features: Integrated address book, Active Directory support, encrypted data transfer, multi send (e-mail, fax, SMB/FTP folder, print) at once
Fax functions (optional)	Compatibility: ITU-T Super G3 Modem speed: Max. 33.6 kbps Transmission speed: Less than 3 seconds. Scanning speed: 2.0 seconds (quick scanning, bitmap)
Paper handling	Input capacity: 100-sheet multi-purpose tray, 60–256 g/m² (52–163 g/m² for larger than A4/Letter size), A3, A4, A5, A6, B5, Letter, Legal, Folio, envelopes, Custom (98 x 148 to 297 x 432 mm) 500-sheet universal paper cassette, 60–256 g/m², A3, A4, A5, B5, Letter, Legal, Folio, max. input capacity with options: 1,600 sheets
Consumables	Address book: 200 (personal address) + 50 entries (group address) Scanning density: Normal: 8 dot/mm x 3.85 line/mm Fine: 8 dot/mm x 7.7 line/mm Superfine: 8 dot/mm x 15.4 line/mm Ultrafine: 16 dot/mm x 15.4 line/mm Halftone: 256 grey scales Maximum original size: A3, Ledger Compression method: JBIG, MMR, MR, MH Memory reception: 700 sheets or more Features: Network fax, duplex transmission and reception, encrypted transmission and reception, polling transmission and reception, broadcast
Options	TK-895K Toner-Kit: Microfine toner black for 12,000 pages A4 TK-895C, TK-895M, TK-895Y, Toner-Kit: Microfine toner cyan, magenta, yellow for 6,000 pages A4 Capacity of starter toner is black 3,000 pages, cyan, magenta, yellow 1,500 pages A4
Warranty	1-year warranty as standard.*** KYOCERA guarantees the drum and developer for 3 years or 200,000 pages (whichever occurs sooner), provided each device is used and cleaned in accordance with the service instructions. KYO LIFE Up to 5-year on-site warranty extensions available for product and options.

Your KYOCERA Business Partner:

1101BRO_FSC8020MFP/C8025MFP_ENC

KYOCERA MITA Europe B.V. – Branch Office Germany – Otto-Hahn-Straße 12 – 40670 Meerbusch – Germany
Tel +49 (0) 2159 928-500 – Fax +49 (0) 2159 918-100
www.kyoceramita-europe.com – info@kyoceramita-europe.com
KYOCERA MITA Corporation – 2-28, 1-Chome – Tamatsukuri – Chuo-Ku
Osaka 540-8585 – Japan – www.kyoceramita.com
* KYOCERA does not warrant that any specifications mentioned will be error-free. Specifications are subject to change without notice. Information is correct at time of going to press. All other brand and product names may be registered trademarks or trademarks of their respective holders and are hereby acknowledged. **Based on 60 months' usage. *** Depending on the country.



Product depicted includes optional extras.